



TECH BULLETIN

063
11/92

Published regarding engineering changes and improvements

SUBJECT: Model 2520C Hi-Temp, Cooled Inlet Pump

To avoid confusion with the corrosion resistant series pumps, this special Hi-Temp pump Model 2527 has been renumbered as a Model 2520C.

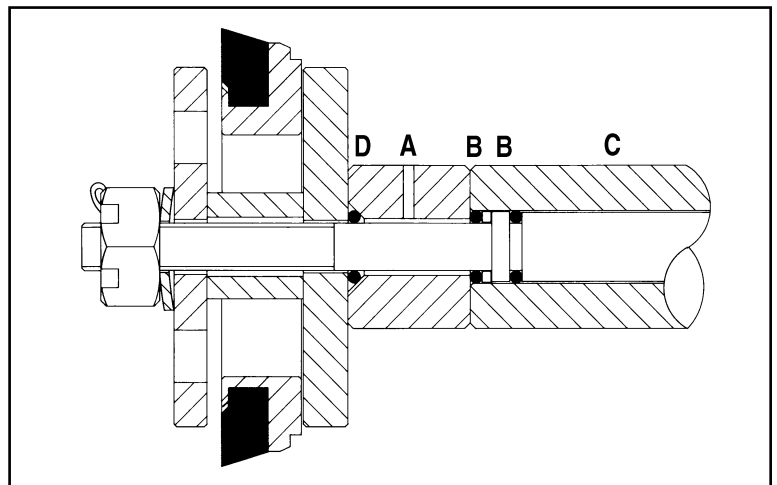
This pump has specially designed dual inlet seals and a specially ported inlet manifold to circulate cool fluid between the two inlet seals to enhance the life of the seals when working with liquid temperatures up to 210°F.

To further enhance the life of this pump, the special inlet spacer has been redesigned with a front taper to accommodate an o-ring. This o-ring offers an internal pressure and fluid seal to prevent fluid from weeping under the spacer and causing loss of performance.

When servicing this pump, you will need to upgrade to the new spacer and o-ring. The old spacer is no longer available.

	Old PN	New PN	Effective Date
Spacer	43273	46148	9/92
O-Ring	—	14198	9/92

For servicing these high temp pumps, (A) Following the installation of the Piston rod O-Rings (B) and sleeve (C), slip this vented spacer onto the rod with the **tapered end forward**. Then install the O-Ring (D) in the tapered groove and proceed with standard piston assembly. See Piston Service Manual for complete pump servicing.



CAT PUMPS
Technical Services Department

Rev. 07/99